

Tetovska 51



BANAT
GRADNJA



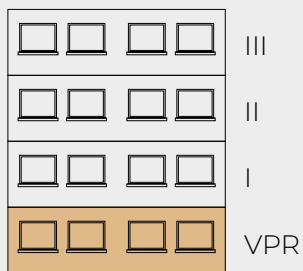
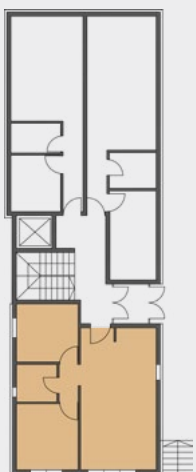
Stan 1

VPR

Dvoiposoban

| | |
|----------------|----------------------|
| Dnevni boravak | 27.10 m ² |
| Spavaća soba 1 | 9.00 m ² |
| Kupatilo | 3.80 m ² |
| Hodnik | 1.70 m ² |
| Spavaća soba 2 | 10.30 m ² |

Ukupno 51.90 m²



ULIČNA FASADA



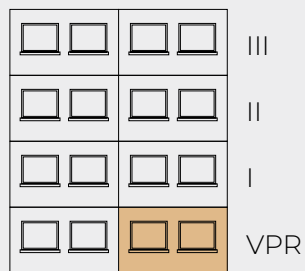
Stan 2

VPR

Jednoiposoban

| | |
|----------------|----------------------|
| Dnevni boravak | 17.20 m ² |
| Kupatilo | 3.70 m ² |
| Hodnik | 5.10 m ² |
| Spavaća soba | 8.60 m ² |

Ukupno 34.60 m²



DVORIŠNA FASADA



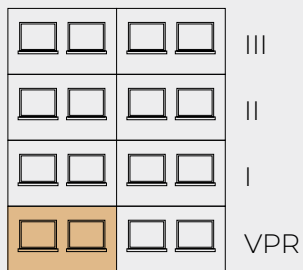
Stan 3

VPR

Dvosoban

| | |
|----------------|----------------------|
| Dnevni boravak | 19.20 m ² |
| Kupatilo | 4.20 m ² |
| Hodnik | 3.10 m ² |
| Spavaća soba | 10.50 m ² |
| Terasa | 3.80 m ² |

Ukupno 40.80 m²



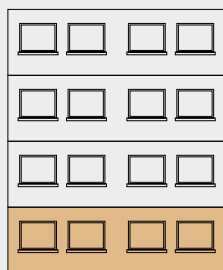
DVORIŠNA FASADA



Stan 4
I SPRAT
Dvoiposoban

| | |
|----------------|----------------------|
| Dnevni boravak | 29.80 m ² |
| Kuhinja | 3.80 m ² |
| Spavaća soba 1 | 9.60 m ² |
| Kupatilo | 4.10 m ² |
| Hodnik | 2.30 m ² |
| Spavaća soba 2 | 13.50 m ² |
| Terasa | 4.30 m ² |

| | |
|--------|----------------------|
| Ukupno | 67.40 m ² |
|--------|----------------------|


ULIČNA FASADA

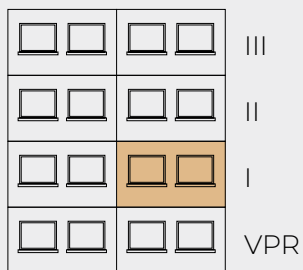

Stan 5

I SPRAT

Jednoiposoban

| | |
|----------------|----------------------|
| Dnevni boravak | 17.20 m ² |
| Kupatilo | 3.70 m ² |
| Hodnik | 5.10 m ² |
| Spavaća soba | 8.60 m ² |

Ukupno 34.60 m²



DVORIŠNA FASADA



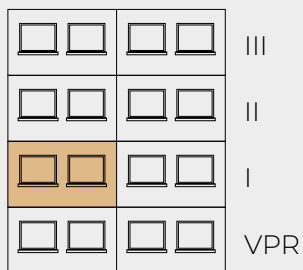
Stan 6

I SPRAT

Dvosoban

| | |
|----------------|----------------------|
| Dnevni boravak | 19.20 m ² |
| Kupatilo | 4.20 m ² |
| Hodnik | 3.10 m ² |
| Spavaća soba | 10.50 m ² |
| Terasa | 3.80 m ² |

Ukupno 40.80 m²



DVORIŠNA FASADA



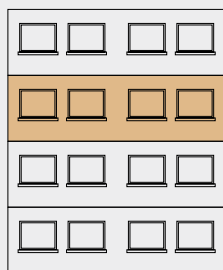
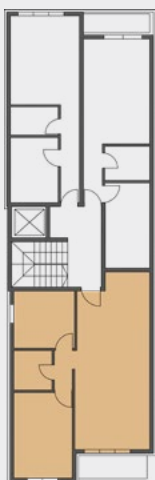
Stan 7

II SPRAT

Dvoiposoban

| | |
|----------------|----------------------|
| Dnevni boravak | 29.80 m ² |
| Kuhinja | 3.80 m ² |
| Spavaća soba 1 | 9.60 m ² |
| Kupatilo | 4.10 m ² |
| Hodnik | 2.30 m ² |
| Spavaća soba 2 | 13.50 m ² |
| Terasa | 4.30 m ² |

Ukupno 67.40 m²



ULIČNA FASADA



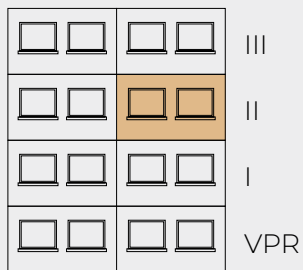
Stan 8

II SPRAT

Jednoiposoban

| | |
|----------------|----------------------|
| Dnevni boravak | 17.20 m ² |
| Kupatilo | 3.70 m ² |
| Hodnik | 5.10 m ² |
| Spavaća soba | 8.60 m ² |

Ukupno 34.60 m²



DVORIŠNA FASADA



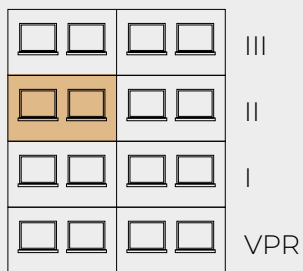
Stan 9

II SPRAT

Dvosoban

| | |
|----------------|----------------------|
| Dnevni boravak | 19.20 m ² |
| Kupatilo | 4.20 m ² |
| Hodnik | 3.10 m ² |
| Spavaća soba | 10.50 m ² |
| Terasa | 3.80 m ² |

Ukupno 40.80 m²



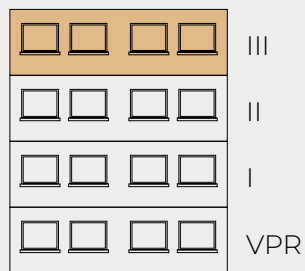
DVORIŠNA FASADA



Stan 10
III SPRAT
Dvoiposoban

| | |
|----------------|----------------------|
| Dnevni boravak | 29.80 m ² |
| Kuhinja | 3.80 m ² |
| Spavaća soba 1 | 9.60 m ² |
| Kupatilo | 4.10 m ² |
| Hodnik | 2.30 m ² |
| Spavaća soba 2 | 13.50 m ² |
| Terasa | 4.30 m ² |

| | |
|--------|----------------------|
| Ukupno | 67.40 m ² |
|--------|----------------------|


ULIČNA FASADA

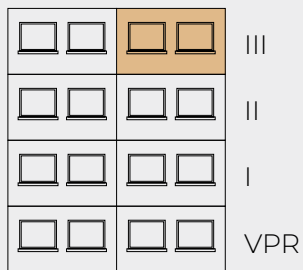

Stan 11

III SPRAT

Jednoiposoban

| | |
|----------------|----------------------|
| Dnevni boravak | 17.20 m ² |
| Kupatilo | 3.70 m ² |
| Hodnik | 5.10 m ² |
| Spavaća soba | 8.60 m ² |

Ukupno 34.60 m²



DVORIŠNA FASADA



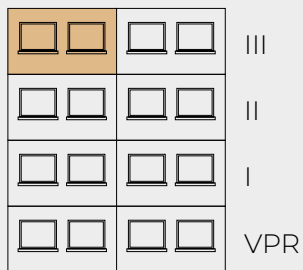
Stan 9

III SPRAT

Dvosoban

| | |
|----------------|----------------------|
| Dnevni boravak | 19.20 m ² |
| Kupatilo | 4.20 m ² |
| Hodnik | 3.10 m ² |
| Spavaća soba | 10.50 m ² |
| Terasa | 3.80 m ² |

Ukupno 40.80 m²



DVORIŠNA FASADA





Križanićeva br.20, lokal br.1, Beograd
063/292-289
011/283-33-34