

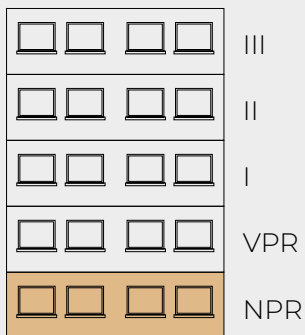


Đorđa Kratovca 60

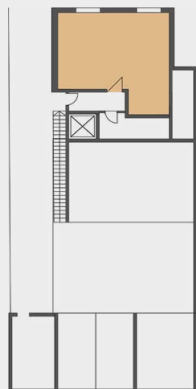
Lokal

NPR

| | |
|----------------|----------------------|
| Ulaz | 2.10 m ² |
| Dnevni boravak | 16.90 m ² |
| Kuhinja | 5.10 m ² |
| Spavaća soba | 9.80 m ² |
| Kupatilo | 3.90 m ² |
| <hr/> | |
| Ukupno | 37.70 m ² |



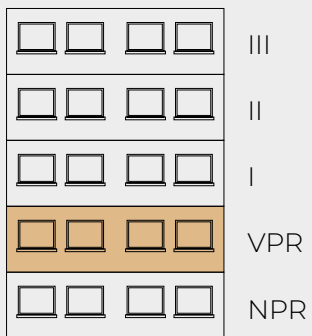
ULIČNA FASADA



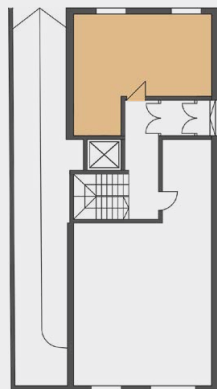
Lokal

VPR

| | |
|----------------|---------------------|
| Ulaz | 1.6 m ² |
| Dnevni boravak | 15.1 m ² |
| Kuhinja | 5.2 m ² |
| Kupatilo | 3.9 m ² |
| Spavaća soba | 10.6 m ² |
| <hr/> | |
| Ukupno | 36.4 m ² |

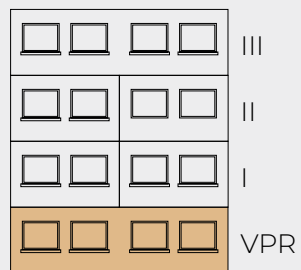


ULIČNA FASADA

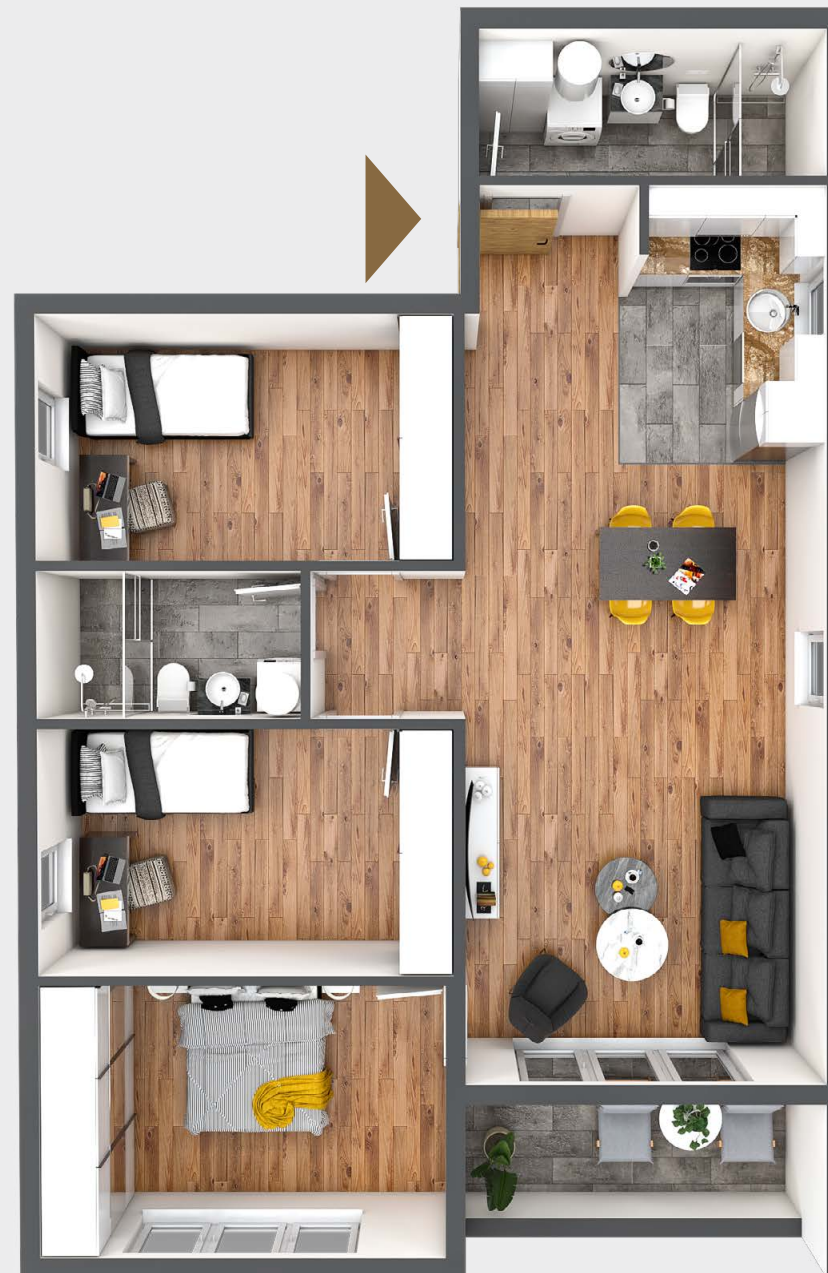
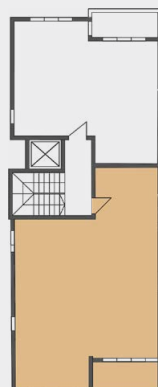


Stan 1
VPR
čtetvorosobni

| | |
|----------------|---------------------|
| Ulaz | 2.1 m ² |
| Dnevni boravak | 30.7 m ² |
| Kupatilo | 5.2 m ² |
| Hodnik | 2.3 m ² |
| Kupatilo | 3.9 m ² |
| Spavaća soba | 10.6 m ² |
| Spavaća soba | 10.5 m ² |
| Spavaća soba | 11.3 m ² |
| Terasa | 5.6 m ² |
| <hr/> | |
| Ukupno | 82.2 m ² |

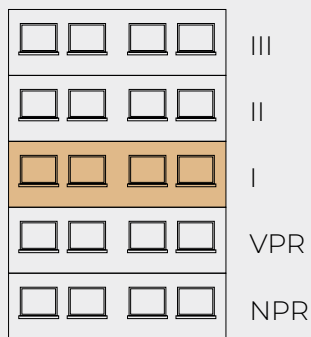


DVORIŠNA FASADA

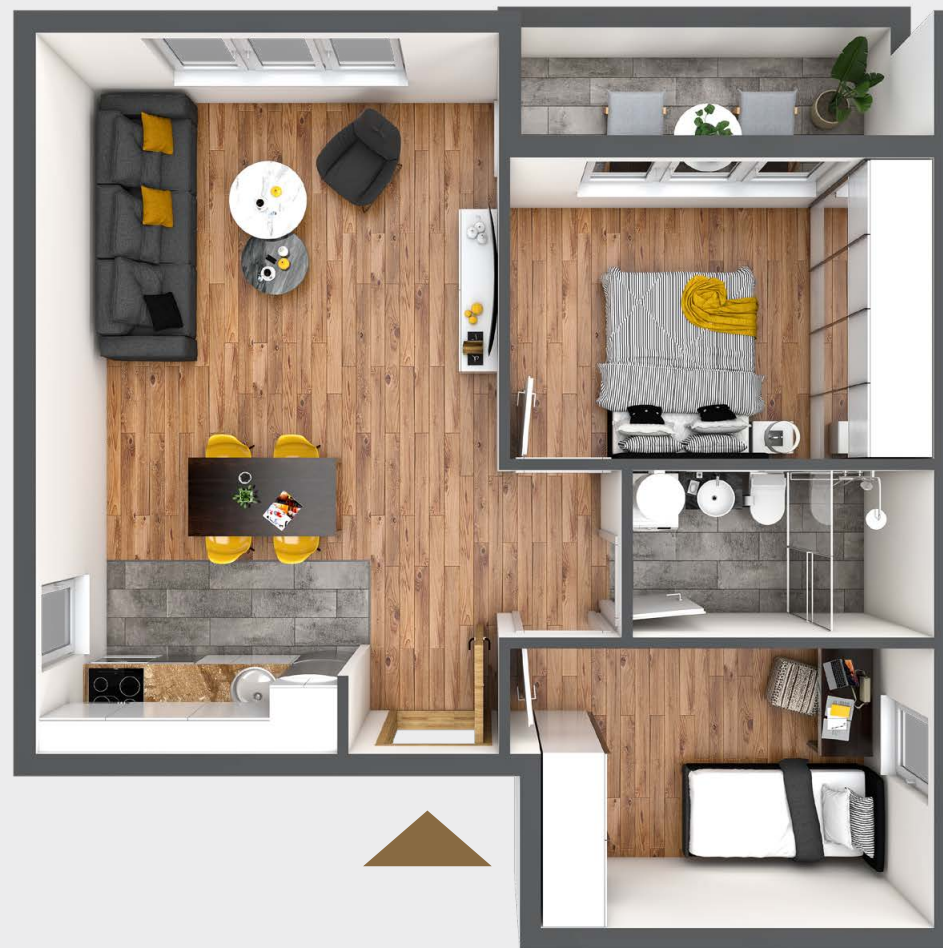
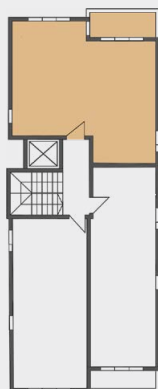


Stan 2
SPRAT I
dvoiposobni

| | |
|----------------|---------------------|
| Ulaz | 1.2 m ² |
| Dnevni boravak | 24.9 m ² |
| Hodnik | 1.4 m ² |
| Kupatilo | 3.9 m ² |
| Spavaća soba | 10.3 m ² |
| Spavaća soba | 9.0 m ² |
| Terasa | 4.9 m ² |
| <hr/> | |
| Ukupno | 55.6 m ² |



ULIČNA FASADA





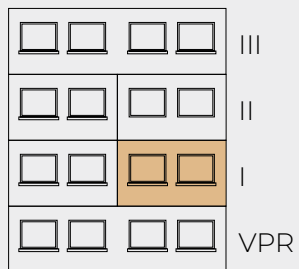
ĐORĐA KRATOVCA 60

Stan 3

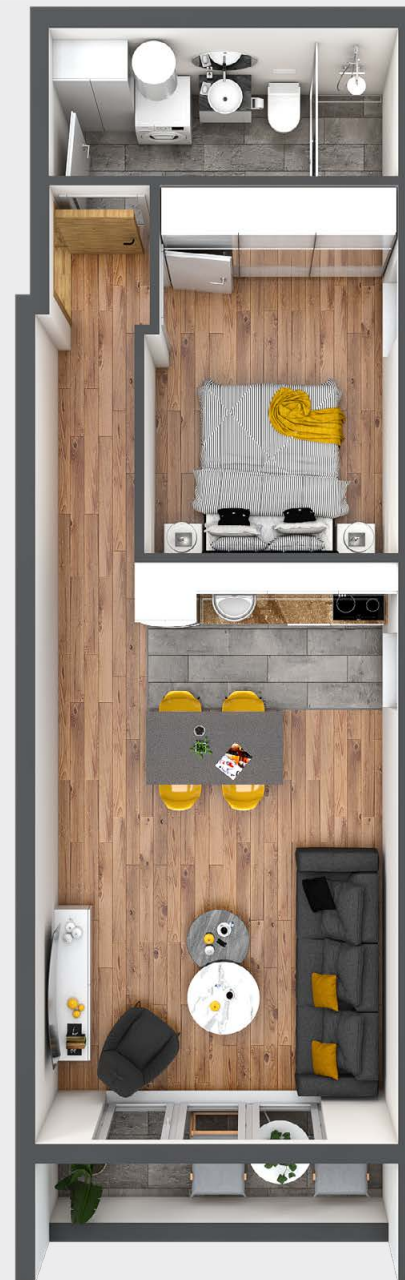
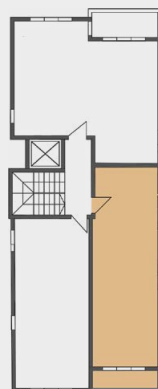
SPRAT I

dvosobni

| | |
|----------------|---------------------|
| Ulaz | 1.4 m ² |
| Hodnik | 2.4 m ² |
| Kupatilo | 5.2 m ² |
| Spavaća soba | 9.2 m ² |
| Dnevni boravak | 21.4 m ² |
| Terasa | 3.6 m ² |
| <hr/> | |
| Ukupno | 43.2 m ² |



DVORIŠNA FASADA

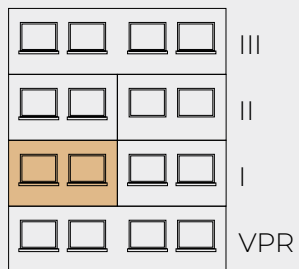


Stan 4

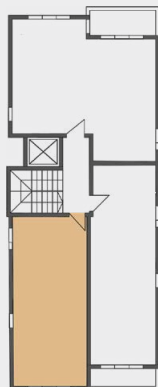
SPRAT I

jednoiposobni

| | |
|-------------|---------------------|
| Ulaz | 3.2 m ² |
| Spavaća | 7.4 m ² |
| Kupatilo | 3.9 m ² |
| Hodnik | 3.7 m ² |
| Dnevna soba | 19.4 m ² |
| <hr/> | |
| Ukupno | 37.6 m ² |



DVORIŠNA FASADA

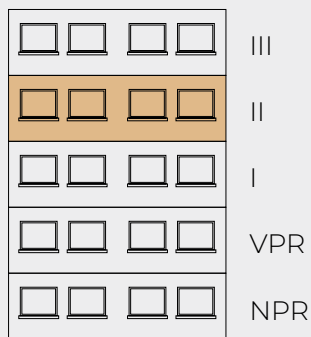


Stan 5

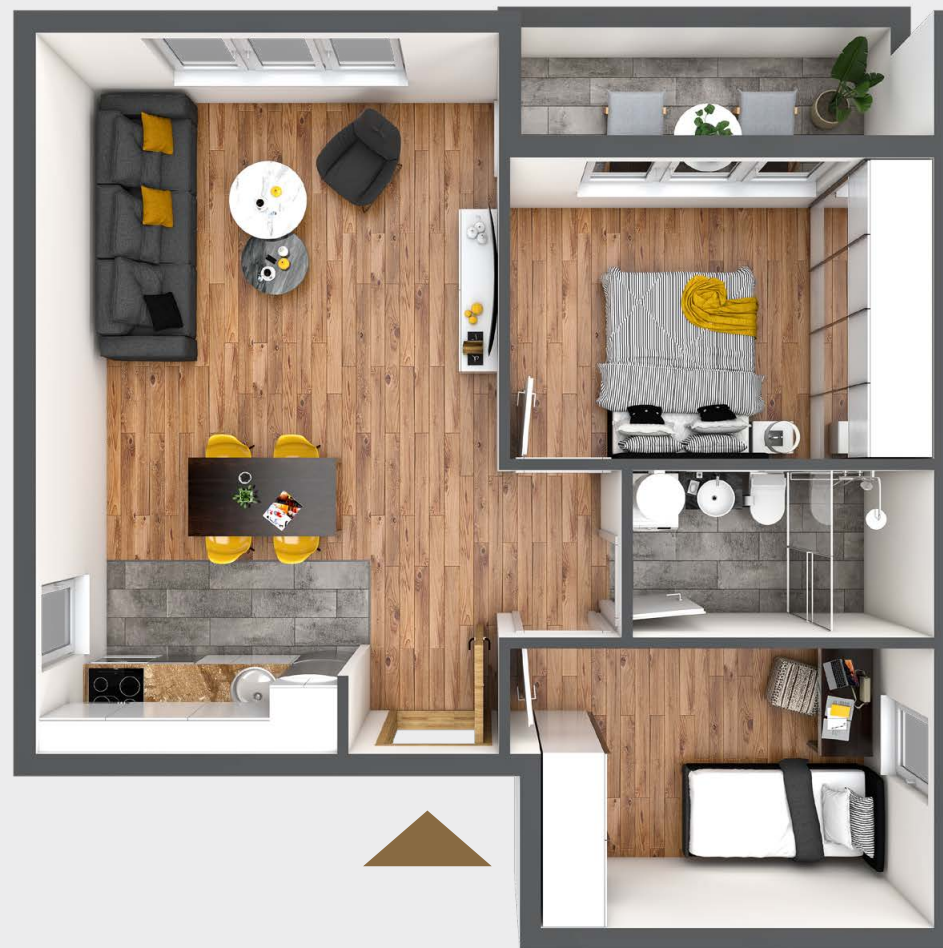
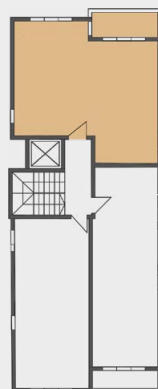
SPRAT II

dvoiposobni

| | |
|----------------|---------------------|
| Ulaz | 1.2 m ² |
| Dnevni boravak | 24.9 m ² |
| Hodnik | 1.4 m ² |
| Kupatilo | 3.9 m ² |
| Spavaća soba | 10.3 m ² |
| Spavaća soba | 9.0 m ² |
| Terasa | 4.9 m ² |
| <hr/> | |
| Ukupno | 55.6 m ² |



ULIČNA FASADA

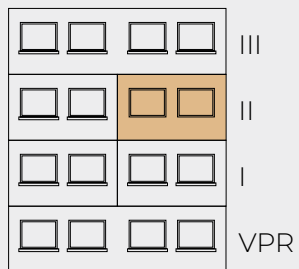


Stan 6

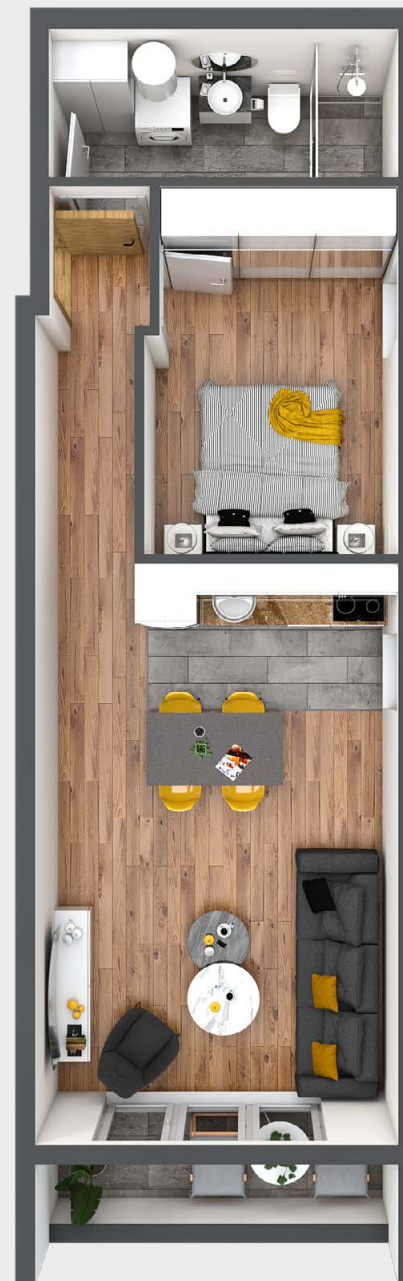
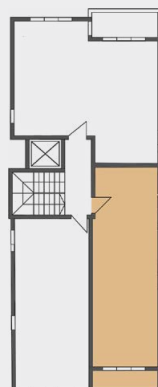
SPRAT II

dvosobni

| | |
|----------------|---------------------|
| Ulaz | 1.4 m ² |
| Hodnik | 2.4 m ² |
| Kupatilo | 5.2 m ² |
| Spavaća soba | 9.2 m ² |
| Dnevni boravak | 21.4 m ² |
| Terasa | 3.6 m ² |
| <hr/> | |
| Ukupno | 43.2 m ² |



DVORIŠNA FASADA

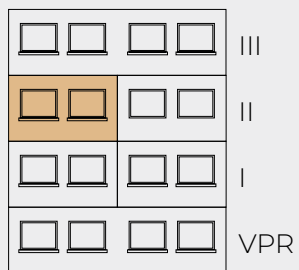


Stan 7

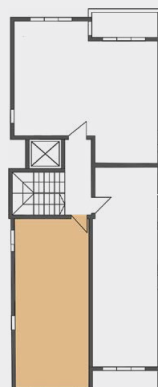
SPRAT II

jednoiposobni

| | |
|-------------|---------------------|
| Ulaz | 3.2 m ² |
| Spavaća | 7.4 m ² |
| Kupatilo | 3.9 m ² |
| Hodnik | 3.7 m ² |
| Dnevna soba | 19.4 m ² |
| <hr/> | |
| Ukupno | 37.6 m ² |

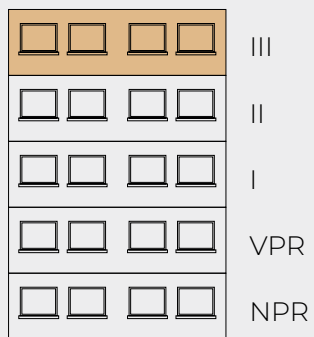


DVORIŠNA FASADA

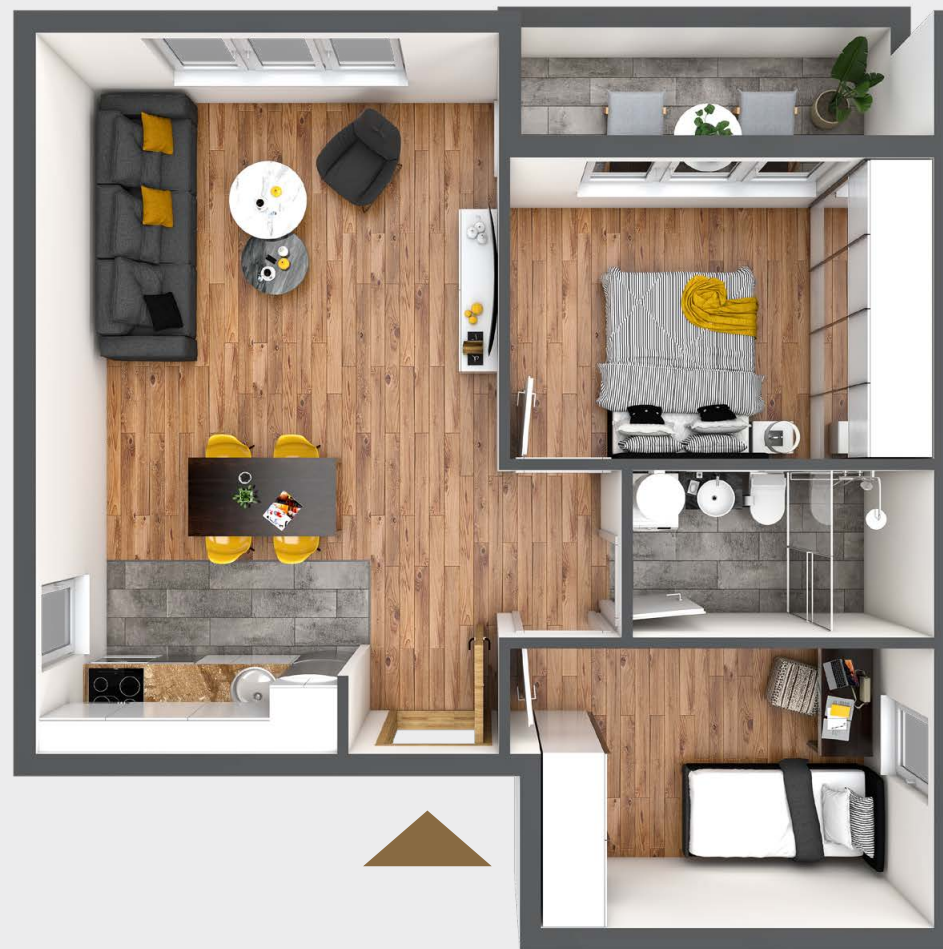
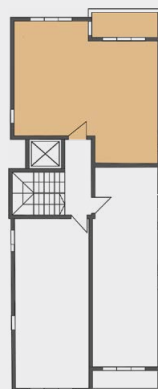


Stan 8
SPRAT III
dvoiposobni

| | |
|----------------|---------------------|
| Ulaz | 1.2 m ² |
| Dnevni boravak | 24.9 m ² |
| Hodnik | 1.4 m ² |
| Kupatilo | 3.9 m ² |
| Spavaća soba | 10.3 m ² |
| Spavaća soba | 9.0 m ² |
| Terasa | 4.9 m ² |
| <hr/> | |
| Ukupno | 55.6 m ² |



ULIČNA FASADA

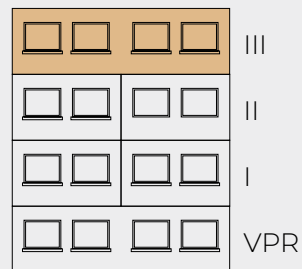


Stan 9

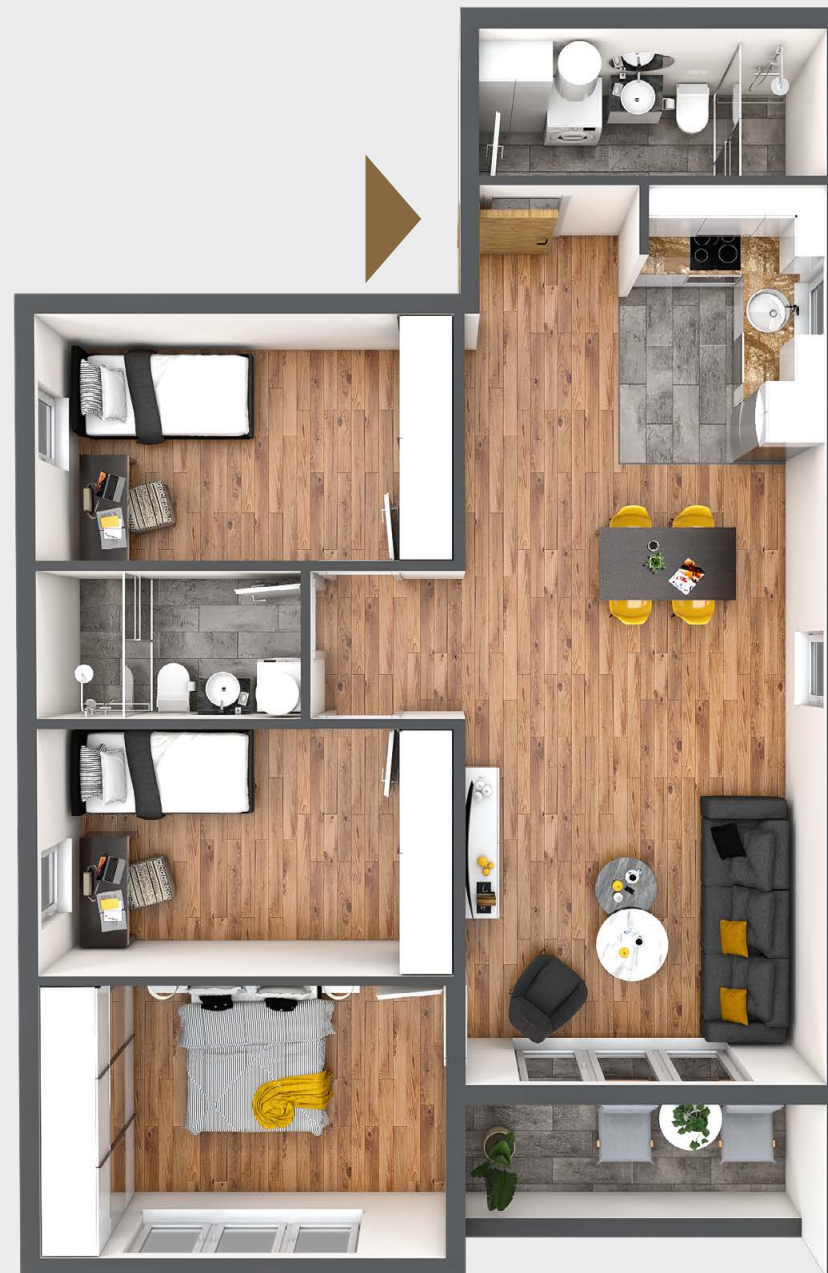
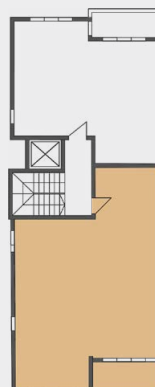
VPR

četvorosobni

| | |
|----------------|---------------------|
| Ulaz | 2.1 m ² |
| Dnevni boravak | 30.7 m ² |
| Kupatilo | 5.2 m ² |
| Hodnik | 2.3 m ² |
| Kupatilo | 3.9 m ² |
| Spavaća soba | 10.6 m ² |
| Spavaća soba | 10.5 m ² |
| Spavaća soba | 11.3 m ² |
| Terasa | 5.6 m ² |
| <hr/> | |
| Ukupno | 82.2 m ² |



DVORIŠNA FASADA





Križanićeva br.20, lokal br.1, Beograd
063/292-289
011/283-33-34