

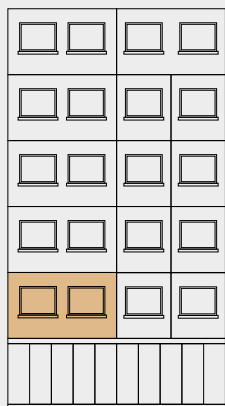


BANAT
GRADNJA

ŠUMATOVAČKA 103

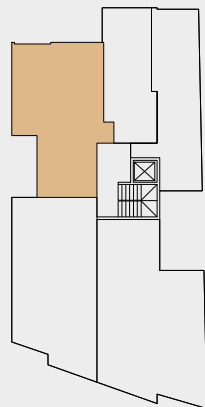
STAN 1
VPR
dvoiposoban

Ulaz	3.00 m ²
Dnevni boravak sa kuhinjom	28.30 m ²
Spavaća soba 1	12.50 m ²
Kupatilo	4.90 m ²
Spavaća soba 2	11.90 m ²
Degažman	1.60 m ²
Dvorište	36.00 m ²
<hr/>	
UKUPNO	62.20 m²



DVORIŠNA FASADA

DVORIŠTE



ULICA

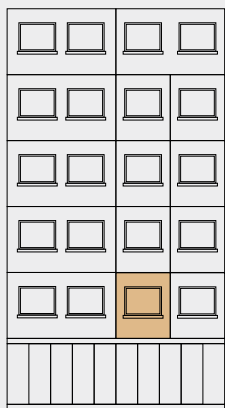


STAN 2

VPR

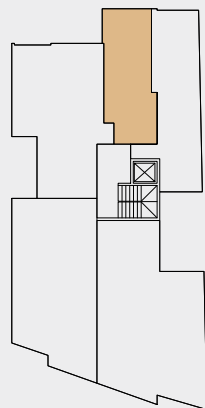
garsonjera

Ulaz	1.60 m ²
Dnevni boravak sa kuhinjom	19.60 m ²
Kupatilo	3.90 m ²
Degažman	5.40 m ²
Dvorište	15.00 m ²
<hr/>	
UKUPNO	30.50 m ²



DVORIŠNA FASADA

DVORIŠTE



ULICA

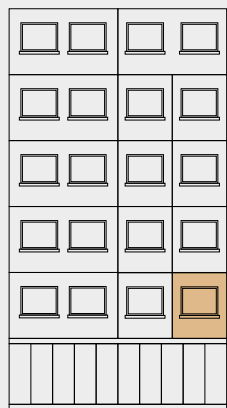


STAN 3

VPR

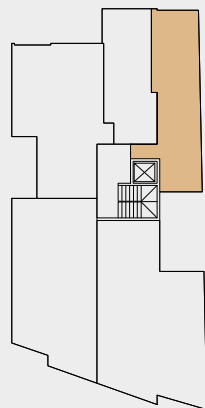
dvosoban

Ulaz	2.90 m ²
Kupatilo	3.90 m ²
Degažman	3.10 m ²
Dnevni boravak sa kuhinjom	22.40 m ²
Spavaća soba	10.10 m ²
Dvorište	16.00 m ²
<hr/>	
UKUPNO	42.40 m ²



DVORIŠNA FASADA

DVORIŠTE



ULICA

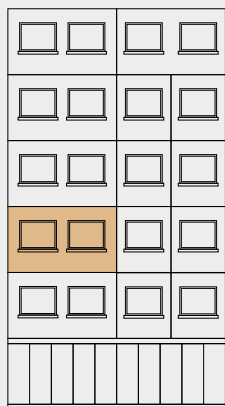


STAN 4

SPRAT I

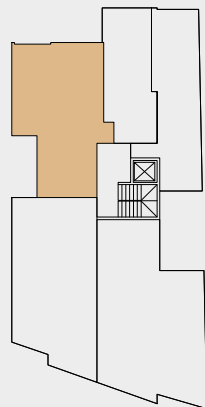
dvoiposoban

Ulaz	3.00 m ²
Dnevni boravak sa kuhinjom	28.30 m ²
Spavaća soba 1	9.30 m ²
Kupatilo	4.90 m ²
Spavaća soba 2	11.90 m ²
Degažman	1.60 m ²
Lođa	3.20 m ²
<hr/>	
UKUPNO	62.20 m ²



DVORIŠNA FASADA

DVORIŠTE



ULICA



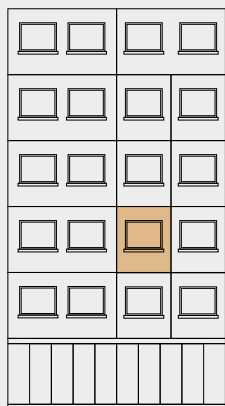
STAN 5

SPRAT I

garsonjera

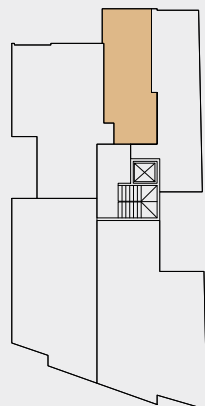
Ulaz	1.60 m ²
Dnevni boravak sa kuhinjom	19.60 m ²
Kupatilo	3.90 m ²
Degažman	5.40 m ²

UKUPNO	30.50 m ²
--------	----------------------



DVORIŠNA FASADA

DVORIŠTE



ULICA

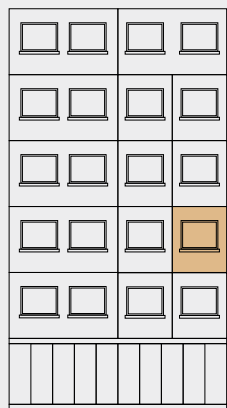


STAN 6

SPRAT I

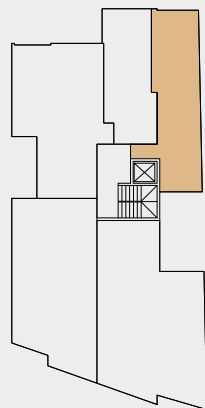
dvosoban

Ulaz	2.90 m ²
Kupatilo	3.90 m ²
Degažman	3.10 m ²
Dnevni boravak sa kuhinjom	18.80 m ²
Spavaća soba	10.10 m ²
Lođa	3.60 m ²
<hr/>	
UKUPNO	42.40 m ²



DVORIŠNA FASADA

DVORIŠTE

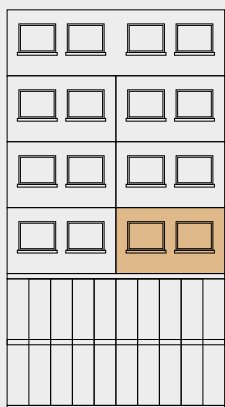


ULICA



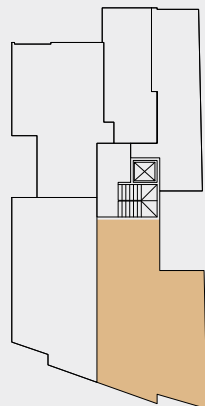
STAN 7
SPRAT I
troiposoban

Ulaz	2.70 m ²
WC	2.30 m ²
Hodnik	4.90 m ²
Spavaća soba 1	9.70 m ²
Dnevni boravak sa kuhinjom	27.10 m ²
Degažman	2.40 m ²
Spavaća soba 2	11.60 m ²
Spavaća soba 3	13.30 m ²
Kupatilo	4.50 m ²
Lođa	5.10 m ²
<hr/>	
UKUPNO	83.60 m²



ULIČNA FASADA

DVORIŠTE



ULICA

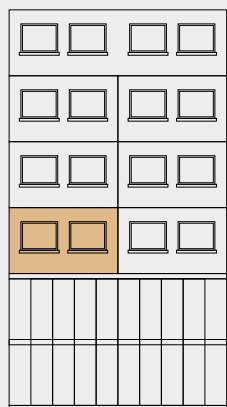


STAN 8

SPRAT I

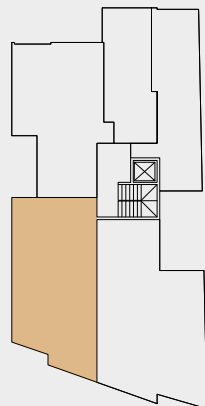
troiposoban

Ulaz	2.90 m ²
Wc	3.10 m ²
Dnevni boravak	33.10 m ²
Degažman	1.70 m ²
Spavaća soba	9.30 m ²
Spavaća soba	10.20 m ²
Kupatilo	3.60 m ²
Lođa	3.20 m ²
<hr/>	
UKUPNO	67.10 m²

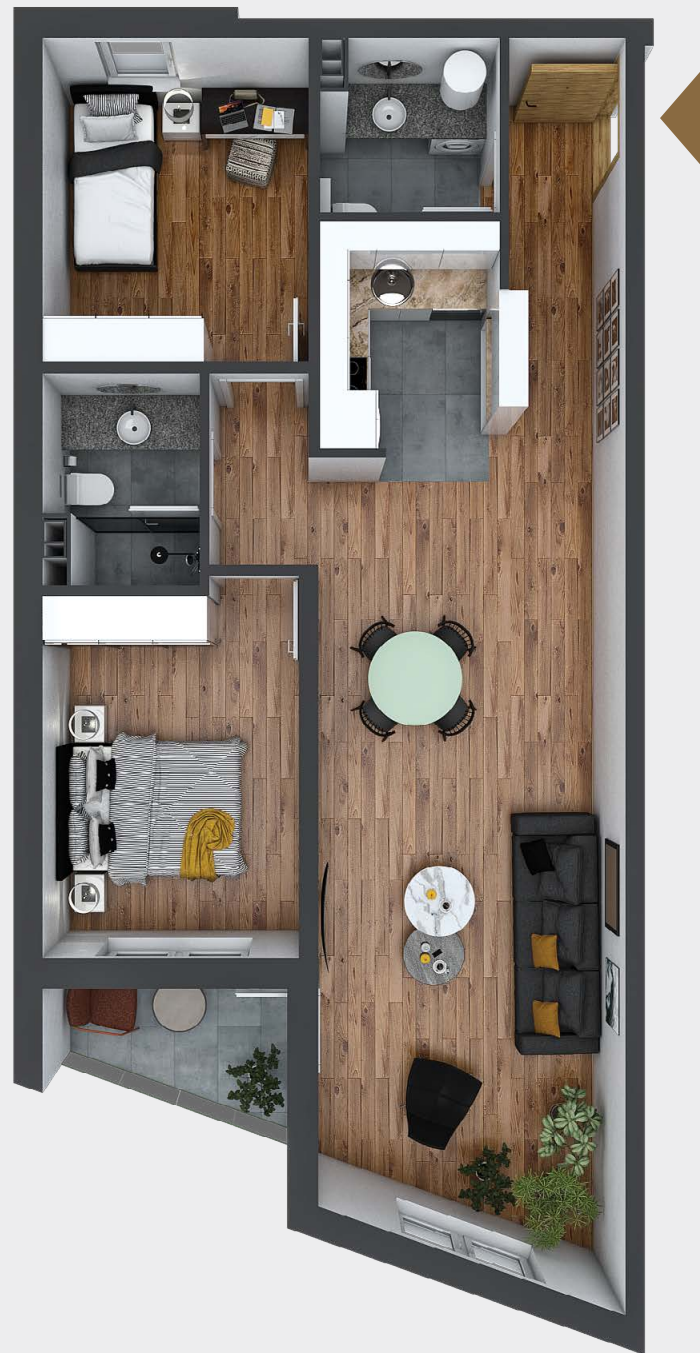


ULIČNA FASADA

DVORIŠTE

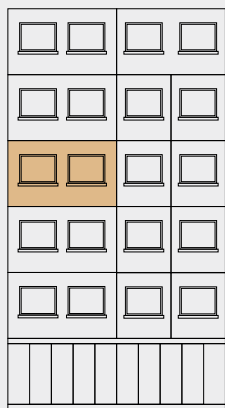


ULICA



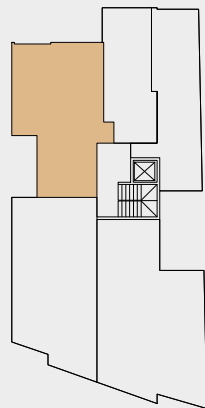
STAN 9
SPRAT II
dvoiposoban

Ulaz	3.00 m ²
Dnevni boravak sa kuhinjom	28.30 m ²
Spavaća soba 1	9.30 m ²
Kupatilo	4.90 m ²
Spavaća soba 2	11.90 m ²
Degažman	1.60 m ²
Lođa	3.20 m ²
<hr/>	
UKUPNO	62.20 m²



DVORIŠNA FASADA

DVORIŠTE



ULICA



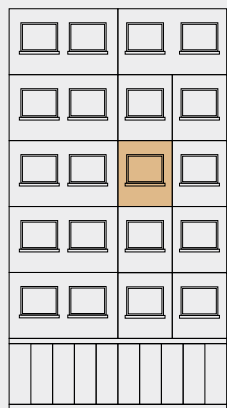
STAN 10

SPRAT II

garsonjera

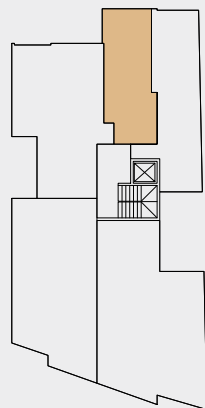
Ulaz	1.60 m ²
Dnevni boravak sa kuhinjom	19.60 m ²
Kupatilo	3.90 m ²
Degažman	5.40 m ²

UKUPNO 30.50 m²



DVORIŠNA FASADA

DVORIŠTE



ULICA

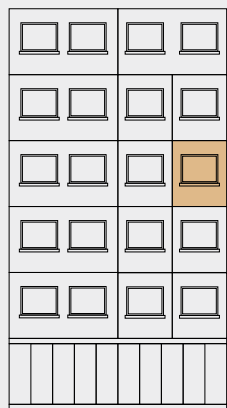


STAN 11

SPRAT II

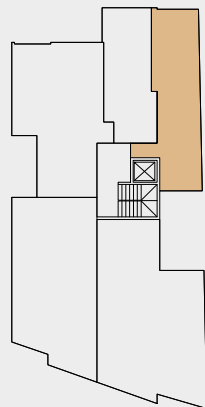
dvosoban

Ulaz	2.90 m ²
Kupatilo	3.90 m ²
Degažman	3.10 m ²
Dnevni boravak sa kuhinjom	18.80 m ²
Spavaća soba	10.10 m ²
Lođa	3.60 m ²
<hr/>	
UKUPNO	42.40 m ²



DVORIŠNA FASADA

DVORIŠTE

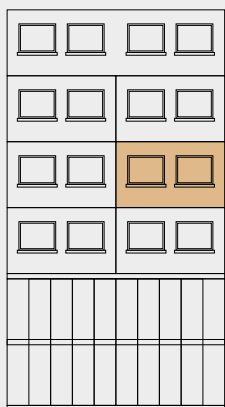


ULICA



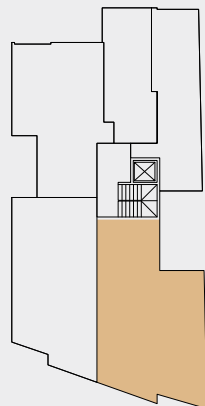
STAN 12
SPRAT II
troiposoban

Ulaz	2.70 m ²
WC	2.30 m ²
Hodnik	4.90 m ²
Spavaća soba 1	9.70 m ²
Dnevni boravak sa kuhinjom	27.10 m ²
Degažman	2.40 m ²
Spavaća soba 2	11.60 m ²
Spavaća soba 3	13.30 m ²
Kupatilo	4.50 m ²
Lođa	5.10 m ²
<hr/>	
UKUPNO	83.60 m²



ULIČNA FASADA

DVORIŠTE



ULICA

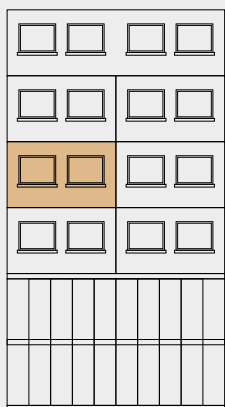


STAN 13

SPRAT II

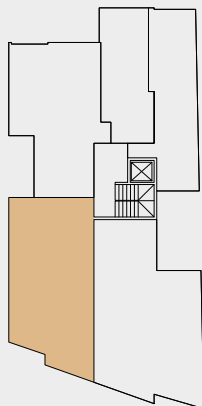
dvoiposaban

Ulaz	2.90 m ²
Wc	3.10 m ²
Dnevni boravak	33.10 m ²
Degažman	1.70 m ²
Spavaća soba	9.30 m ²
Spavaća soba	10.20 m ²
Kupatilo	3.60 m ²
Lođa	3.20 m ²
<hr/>	
UKUPNO	67.10 m²



ULIČNA FASADA

DVORIŠTE



ULICA



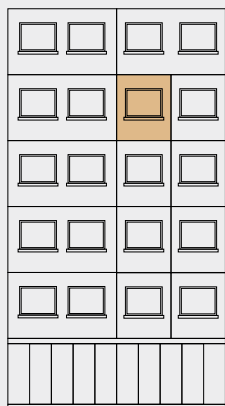
STAN 15

SPRAT III

garsonjera

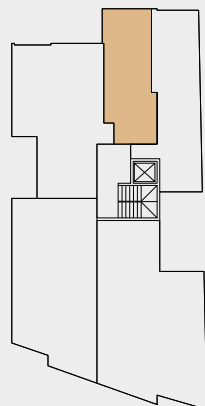
Ulaz	1.60 m ²
Dnevni boravak sa kuhinjom	19.60 m ²
Kupatilo	3.90 m ²
Degažman	5.40 m ²

UKUPNO 30.50 m²



DVORIŠNA FASADA

DVORIŠTE



ULICA

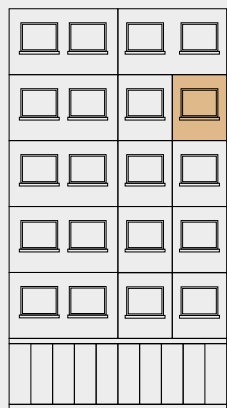


STAN 16

SPRAT III

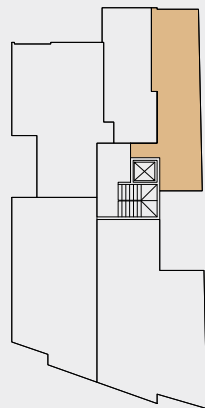
dvosoban

Ulaz	2.90 m ²
Kupatilo	3.90 m ²
Degažman	3.10 m ²
Dnevni boravak sa kuhinjom	18.80 m ²
Spavaća soba	10.10 m ²
Lođa	3.60 m ²
<hr/>	
UKUPNO	42.40 m ²

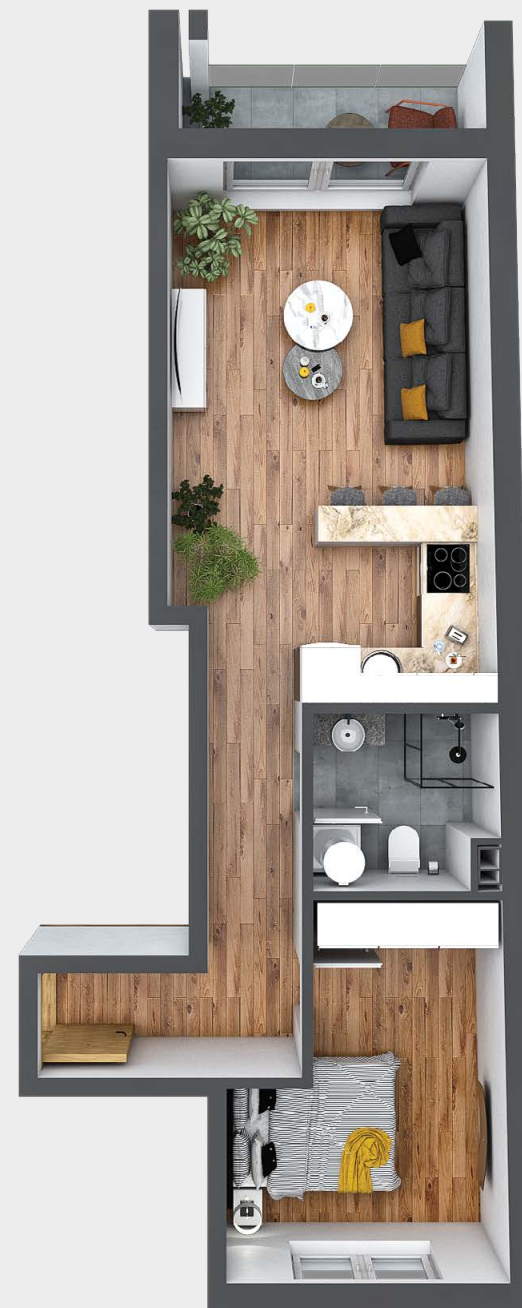


DVORIŠNA FASADA

DVORIŠTE



ULICA

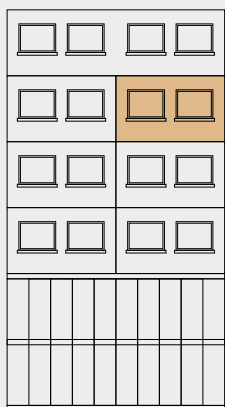


STAN 17

SPRAT III

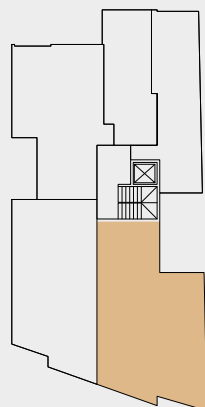
troiposoban

Ulaz	2.70 m ²
WC	2.30 m ²
Hodnik	4.90 m ²
Spavaća soba 1	9.70 m ²
Dnevni boravak sa kuhinjom	27.10 m ²
Degažman	2.40 m ²
Spavaća soba 2	11.60 m ²
Spavaća soba 3	13.30 m ²
Kupatilo	4.50 m ²
Lođa	5.10 m ²
<hr/>	
UKUPNO	83.60 m²



ULIČNA FASADA

DVORIŠTE

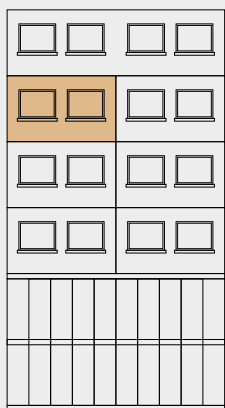


ULICA



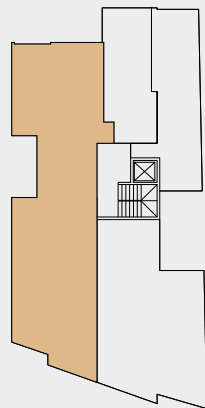
STAN 18
SPRAT III
četvorosoban

Ulaz	4.10 m ²
Wc	3.70 m ²
Kuhinja	6.10 m ²
Dnevni boravak	41.30 m ²
Degažman	5.90 m ²
Spavaća soba 1	17.10 m ²
Spavaća soba 2	12.40 m ²
Spavaća soba 3	25.50 m ²
Kupatilo	3.20 m ²
Lođa	11.20 m ²
<hr/>	
UKUPNO	130.50 m²



ULIČNA FASADA

DVORIŠTE



ULICA

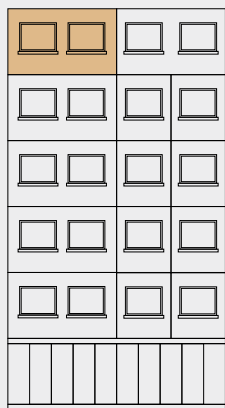


STAN 19

SPRAT IV

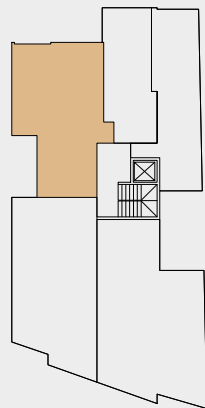
dvoiposoban

Ulaz	3.00 m ²
Dnevni boravak sa kuhinjom	28.30 m ²
Spavaća soba 1	9.30 m ²
Kupatilo	4.90 m ²
Spavaća soba 2	11.90 m ²
Degažman	1.60 m ²
Lođa	3.20 m ²
<hr/>	
UKUPNO	62.20 m ²



DVORIŠNA FASADA

DVORIŠTE



ULICA



STAN 20

SPRAT IV

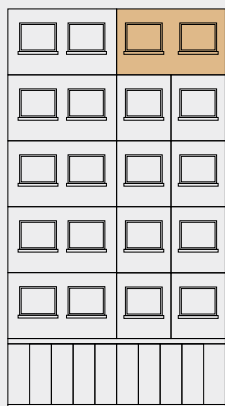
trosoban

Ulaz	4.30 m ²
Wc	2.40 m ²
Kuhinja	6.30 m ²
Dnevni boravak	23.80 m ²
Spavaća soba	15.40 m ²
Garderoba	14.10 m ²
Degažman	1.80 m ²
Kupatilo	3.70 m ²
Lođa	3.30 m ²

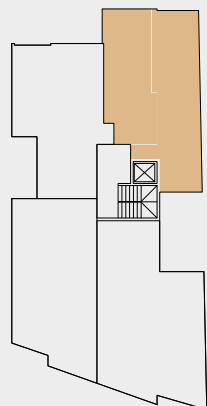
UKUPNO 75.10 m²



DVORIŠTE



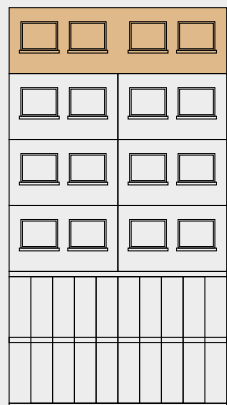
DVORIŠNA FASADA



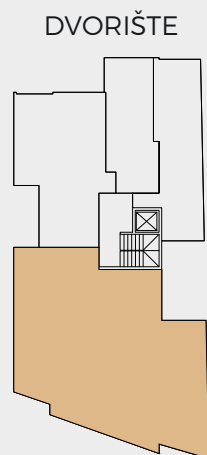
ULICA

STAN 21
SPRAT IV
četvorosoban

Ulaz	5.20 m ²
Wc	3.40 m ²
Master spavaća	17.70 m ²
Master kupatilo	4.00 m ²
Dnevni boravak	61.40 m ²
Deganžman	3.60 m ²
Spavaća soba 1	11.20 m ²
Spavaća soba 2	11.80 m ²
Spavaća soba 3	15.10 m ²
Kupatilo	4.90 m ²
Terasa	9.90 m ²

UKUPNO 148.20 m²


ULIČNA FASADA



ULICA





Križanićeva br.20, lokal br.1, Beograd
063/292-289
011/283-33-34